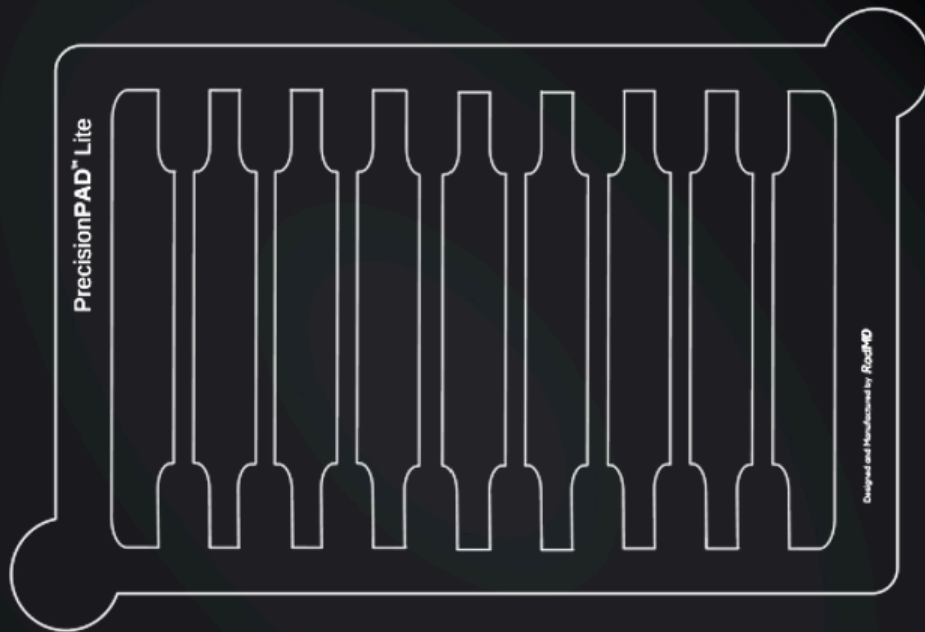


PrecisionPAD™

Robust. **Functional.** Aesthetic.



CONTENTS

About Us	2
Features	3
PrecisionPAD Regular	4
PrecisionPAD Lite	5
PrecisionPAD Storage Box	6
Testimonials	7
Why Choose PrecisionPAD	8
Clinical Examples 1	9
Clinical Examples 2	10
Instructions for Use 1	11
Instructions for Use 2	12
Product Safety	13
Contact Details	14

ABOUT US

RadMD is a pioneering medical technology company founded in Australia, specialising in the development of CT Grids for a wide range of medical procedures.

The co-founders are both medical imaging professionals specialising in the field of interventional procedures. RadMD has leveraged their deep expertise to develop their flagship product, the Precision**PAD**.™

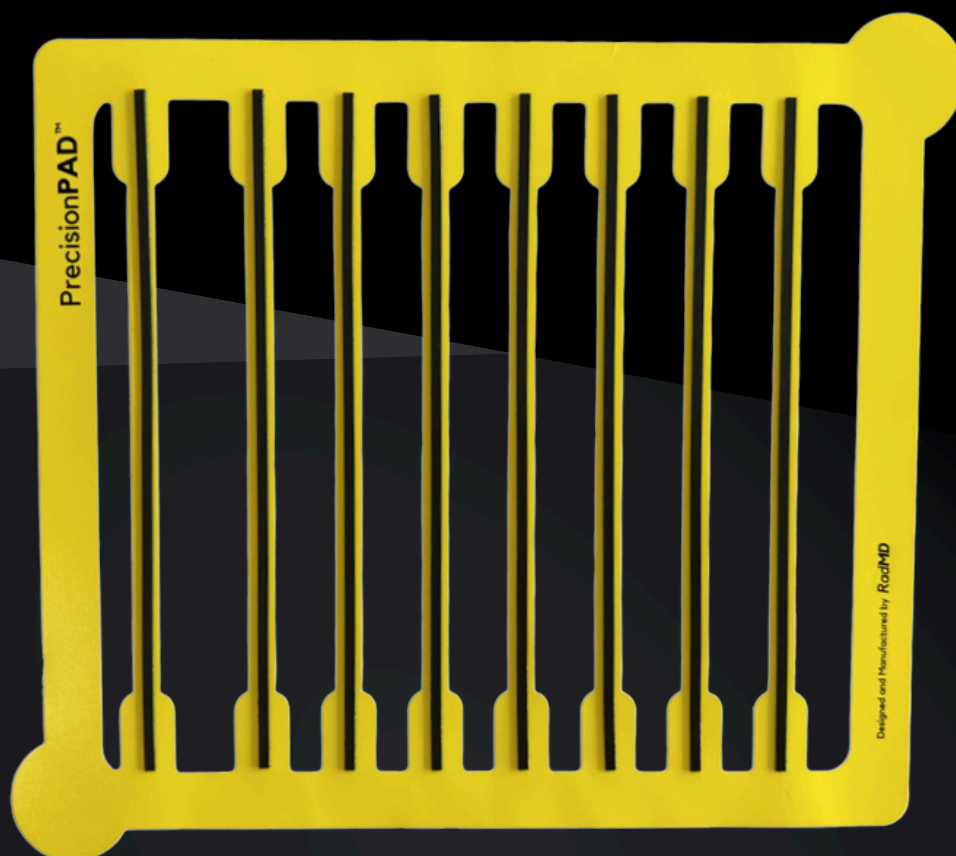
RadMD is proud to present a product that is robust for the busy clinical environment, highly functional for its intended purpose and beautifully aesthetic.

Our mission is to provide tools that not only perform exceptionally but also contribute to a seamless and sophisticated clinical experience.

FEATURES

- 8 radiopaque lines
- Radiopaque lines are spaced 15mm apart to allow for 3 possible marking variations per line
- Wider spacing on one side to aid left/right localisation
- Made from flexible material to increase contouring ability and eliminate air gap
- Durable and adherent material
- Aesthetic design with two grip tabs on each corner
- Two sizes Precision**PAD** Regular and Precision**PAD** Lite

PrecisionPAD Regular



18 x 16 cm (7.1 x 6.3 inches)
Each pack contains 15 pcs

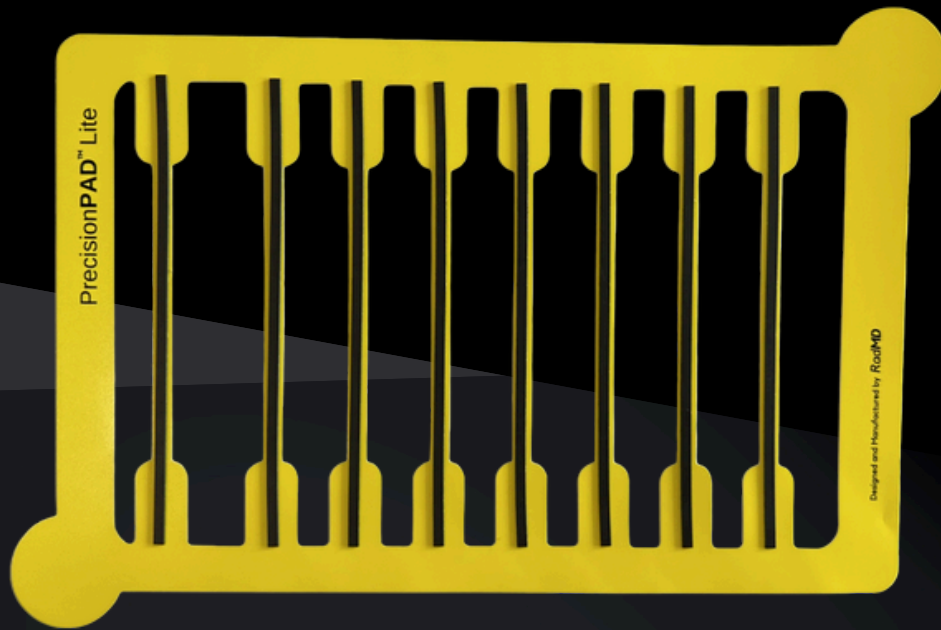


Single Use only; discard after each patient. Non-sterile. Does not contain Natural Rubber Latex.

www.radmd.com.au

RADMD
SOLUTIONS IN IMAGING

PrecisionPAD Lite



18 x 12 cm (7.1 x 4.7 inches)
Each pack contains 20 pcs



Single Use only; discard after each patient. Non-sterile. Does not contain Natural Rubber Latex.

www.radmd.com.au

RADMD
SOLUTIONS IN IMAGING

REUSEABLE STORAGE BOX



Precision**PAD** Regular Box 23 x 19 x 4 cm
Precision**PAD** Lite Box 23 x 15 x 4 cm

Reusable storage box, contact your local distributor or RadMD directly to order

www.radmd.com.au

RADMD
SOLUTIONS IN IMAGING

TESTIMONIALS



“With consistently busy procedures lists, the PrecisionPAD makes marking extremely easy and accurate. The PrecisionPAD adheres securely to all patients and is easy to remove or reposition as needed making it a valuable addition to our CT procedures.”

-Kirstie Harris, Site Manager, Qscan Radiology Clinics

“I have been using PrecisionPAD grids for over a month now for a range of CT Guided Procedures and they have been excellent to use. They are really light and flexible allowing them to mould to the patients anatomy resulting in accurate marking up. This has been particularly useful for knee and c-spine injections. I highly recommend this product.”

-Ali Kinsella, Radiographer WiSE Radiology

We switched to the PrecisionPAD 12 months ago after hearing about them from a colleague. They have been durable, easy to use and serves its purpose without fuss. I particularly like the reusable storage box and the design.

*-Anthony Barbaro, Chief Radiographer
Aspect Radiology*

We've had a considerable amount of cost savings since switching to the PrecisionPAD. Our clinic performs 10-15 CT guided procedures daily and the PrecisionPAD has allowed us to maintain efficiency and accuracy. I highly recommended to all clinics performing procedures.

-Deneil Manafi, Radiographer, Site Manager, Qscan Radiology Clinics

We have found the transition to the PrecisionPAD to be seamless. The flexibility is excellent and allows us to perform procedures on any part of the body with ease.

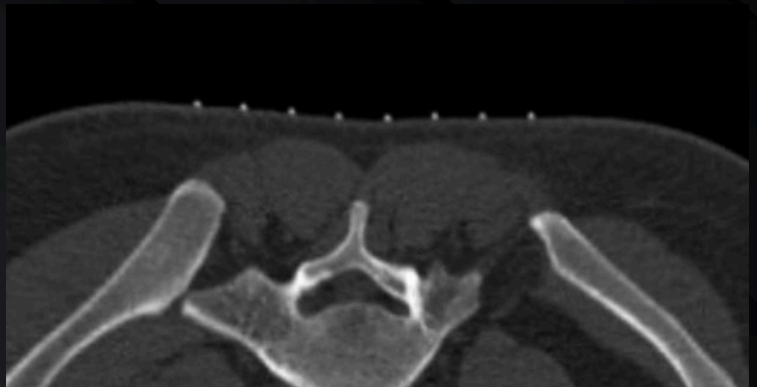
-Nghiem Nguyen, Radiographer, Site Manager, Qscan Radiology Clinics



Why Choose PrecisionPAD?

PrecisionPAD™

- ✓ Durable and aesthetic
- ✓ Exceptional contouring and adhesiveness
- ✓ Precise location for efficient planning and procedural ease
- ✓ Cheaper than other products on the market



Other products on the market

- ✗ Poor adhesiveness creating an air gap
- ✗ Buckling resulting in highly variable procedure planning
- ✗ Expensive



CLINICAL EXAMPLES



Precision**PAD**[™] Lite applied to a knee interventional procedure demonstrating exceptional contouring.



Precision**PAD**[™] Regular applied over a prosthetic hip demonstrating good visibility despite metallic artefact.

CLINICAL EXAMPLES



Precision**PAD** Lite applied to the cervical spine interventional procedure demonstrating exceptional contouring with no air gaps.

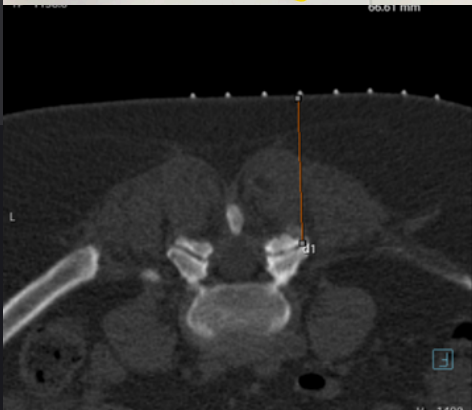


Precision**PAD** Lite applied to the anterior ankle demonstrating exceptional contouring with no air gaps.

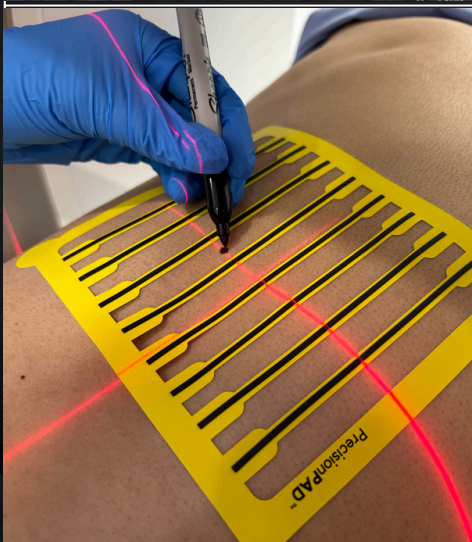
1. INSTRUCTIONS FOR USE



1. Peel Grid from backing and place on patient's site of interest.



2. Use the radiopaque markers to determine best entry point under CT.



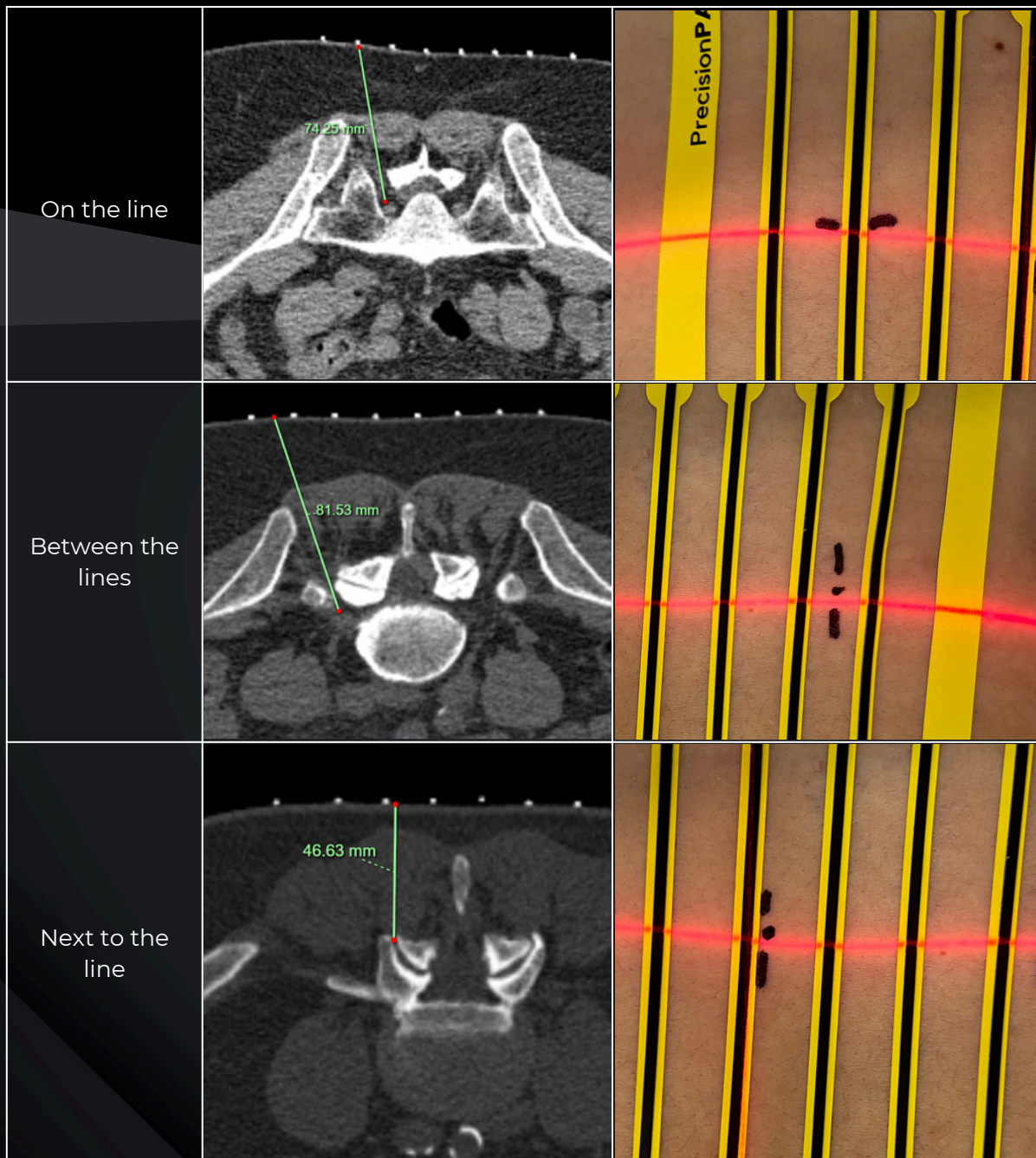
3. Use a pen to mark the Radiologist's preferred entry site (*see below for detailed instructions*)

4. Remove grid after markup and sterilise the area.

Discard after use.

2. INSTRUCTIONS FOR USE

The PrecisionPAD™ is engineered with wider spacing in between the radiopaque lines. This design allows for three marking variations, giving users more options and enhanced precision.



PRODUCT SAFETY

This product is intended for single use only and must not be reused or reprocessed, as doing so may compromise safety and effectiveness. It is non-sterile and should not be employed in any sterile procedures or environments. Designed to be latex-free, this product is suitable for individuals with latex allergies. Store it in a cool, dry place away from direct sunlight and contaminants, and handle it with clean hands or gloves to prevent contamination. After use, dispose of the product according to local regulations for medical waste. Ensure that the product is compatible with your intended medical applications before use and always adhere to the specific instructions provided. If the packaging is damaged or if there are any concerns about the product's integrity, do not use it. For any questions or concerns about its use, consult with a healthcare professional.



Single Use only; discard after each patient.



Non-sterile; this product is not intended for use in sterile environments. Ensure proper hygiene practices are followed during use



Latex free. Does not contain Natural Rubber Latex. Suitable for use in individuals with latex allergies



Keep dry; store in a cool, dry place away from moisture to ensure optimal performance and integrity of the product.

Therapeutic Goods Administration (TGA) Registered
ARTG Identifier 458431

If any serious incident occurs in relation to this device, report it to RadMD and to the competent authority of the Health District in which the user and/or patient is established.

CONTACT DETAILS

Manufactured by RadMD Pty. Ltd.
ABN 66 679 030 310

For ordering and enquiries email sales@radmd.com.au

Suite 3, Shop 3, 64 Thomas Drive,
Surfers Paradise, Gold Coast, QLD
Australia, 4217

© 2024 RadMD. All rights reserved.

