

TKEZYM

Manual Transfer Trolley

Size:1970*640*560-860mm



Technical parameters

Size	L1970*W960*H560-860mm	Height adjustment range	560-860mm
Back section adjustable from	0-60°	Load capacity	200KGS

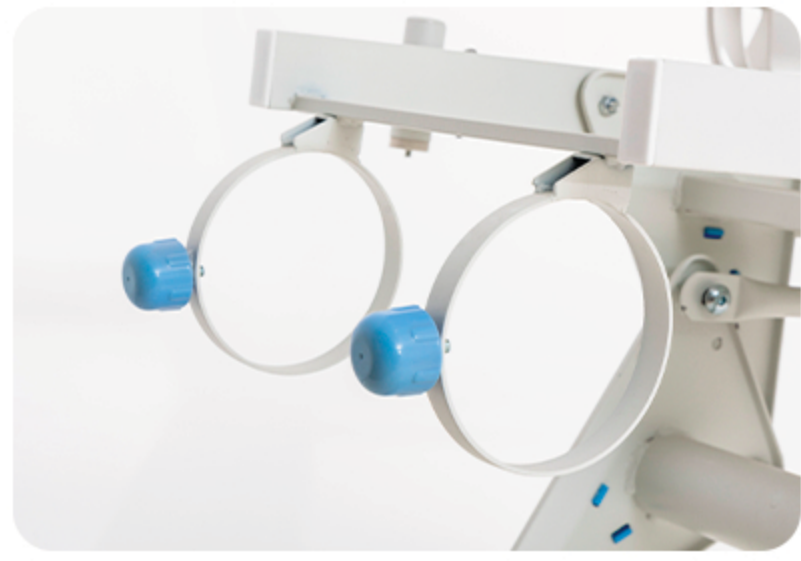
Technical configuration

Side rails: 2pcs, ABS, collapsible	Back section is operated by gas spring handle
Height adjustment is operated by manual crank	ABS platform
ABS base with storage function	Central braking foot pedal at dual side
Fifth wheel to guide the direction	Standard accessories: Transfer Mattress, I.V. Drip pole

Description of bed posture



Details instructions



Oxygen cylinder holder



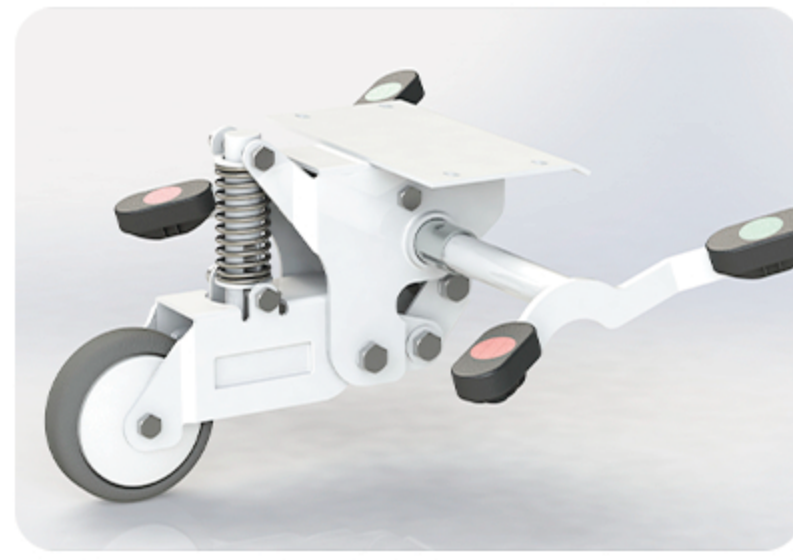
Back section adjustment controlled by gas spring



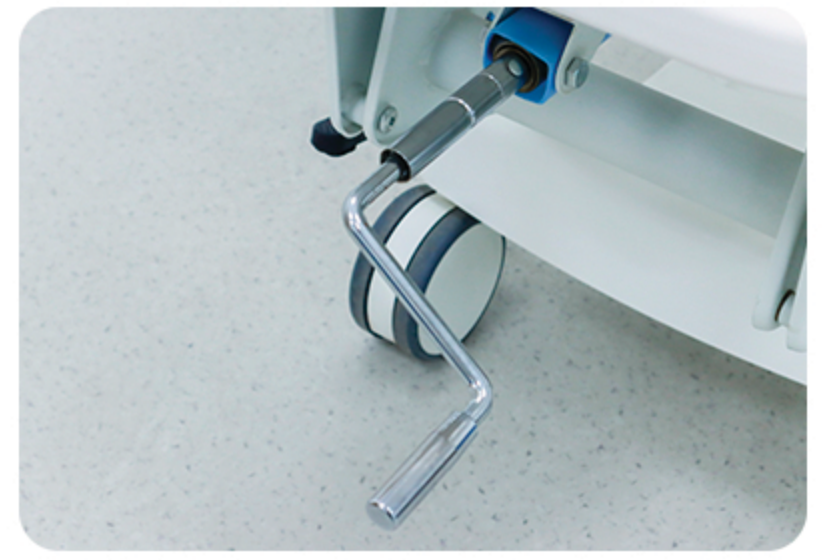
Center braking system



6 inch Luxury double side castor



The fifth wheel



Height adjustment controlled by manual crank

1300 788 928

info@diagmed.com.au

www.diagmed.com.au



diagmed
diagnostic & medical

Quick Order